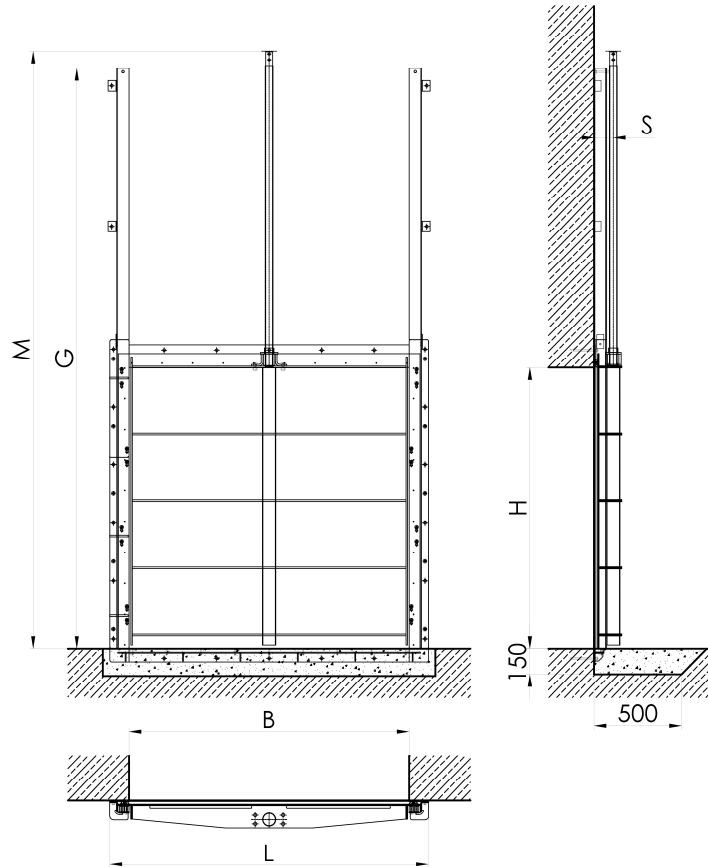


Dimension 1300 x 1300 to 2200 x 2200 - Wall fixing



Dimensions	L	G	M	S	Weight [kg]
1300 x 1300	1520	ca. 2750	ca. 2850	90	ca. 230
1400 x 1400	1620	ca. 2950	ca. 3050	90	ca. 260
1500 x 1500	1720	ca. 3150	ca. 3250	110	ca. 300
1600 x 1600	1820	ca. 3350	ca. 3450	110	ca. 320
1800 x 1800	2020	ca. 3750	ca. 3850	110	ca. 450
2000 x 2000	2240	ca. 4150	ca. 4250	110	ca. 600
2200 x 2200	2440	ca. 4550	ca. 4650	110	ca. 800

All dimensions in mm

Design: TESACO, acc. to DIN 19569-4, BS 7775:2005, ANSI/AWWA C561-04, 4-face sealing

Material: The following standard material combinations are available:

Type: A4 - Frame and door fabricated from S.S. 316
 Type: A2 - Frame and door fabricated from S.S. 304

Door seal made of waste water resistant neoprene
 Wall seal made of Silicone (to be provided locally)
 Wedge components made of plastic PA
 Spindle nut made of corrosion resistant bronze
 Spindle made of stainless steel type 316
 Fastening elements made from S.S.316

Corrosion protection: Stainless steel pickled and passivated