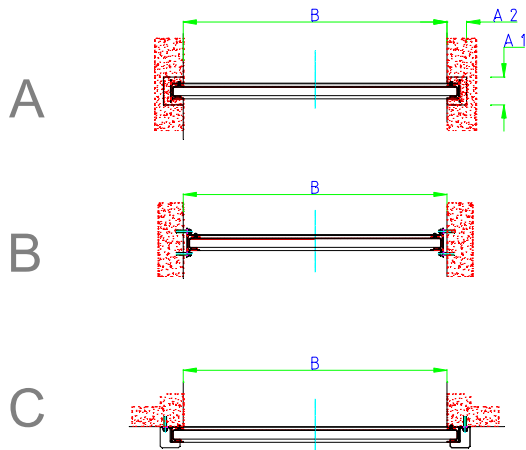
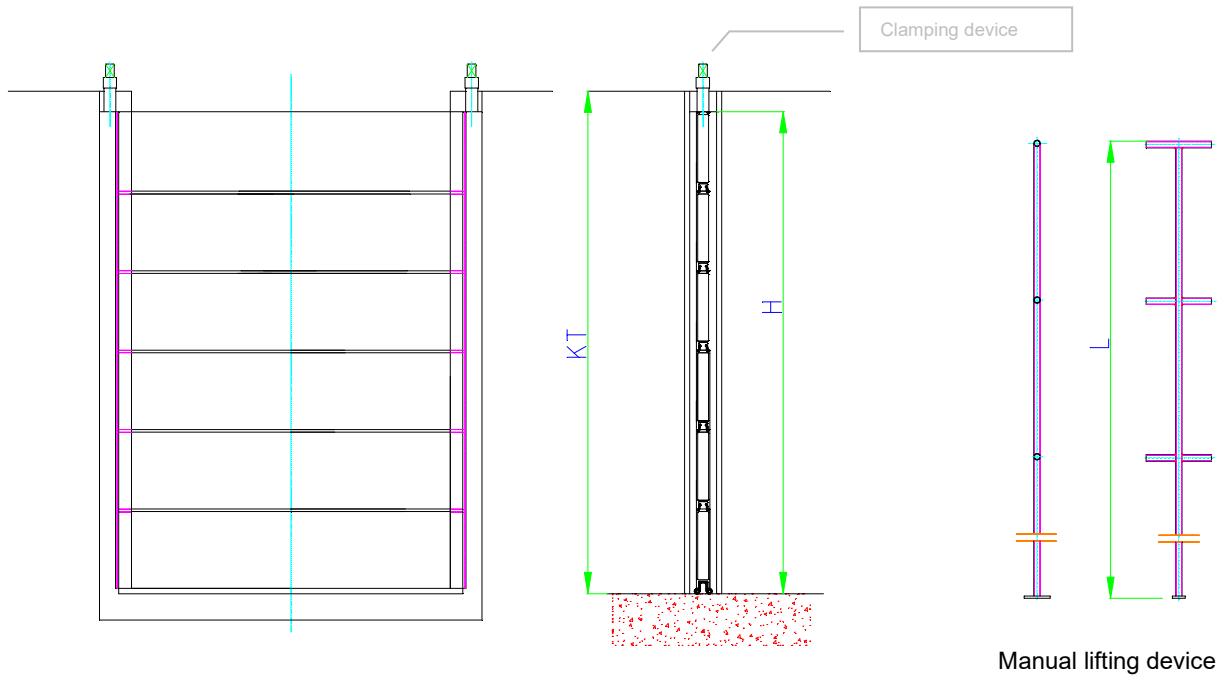


Stop Logs made from Aluminium



Fixing types:

- A - Grouted in channel recesses
- B - Wall fixing inside the channel
- C - Wall fixing in front of the channel

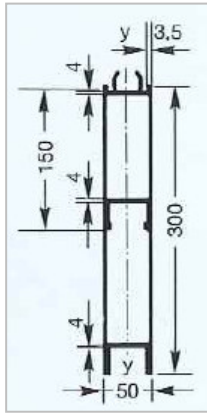
In addition all three types could be combined with each other.

Stop Log	A1	A2
Type DB1	150	100
Type DB2	190	100
Type DB3	280	100

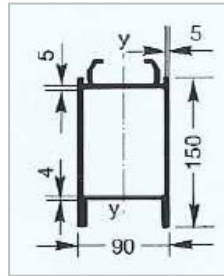
All dimensions in mm

- Design: TESACO, acc. to DIN 19569-4, 3-face sealing
- Optional: Clamping device, Manual lifting device
- Material: Stop Logs made from aluminium
 Guides made from SS 304 or SS 316Ti
 Sealing between stop logs made from EPDM
 Sealing on guides made from waste water resistant neoprene
 Fastening elements made from S.S.316
- Corrosion protection: Stainless steel pickled and passivated

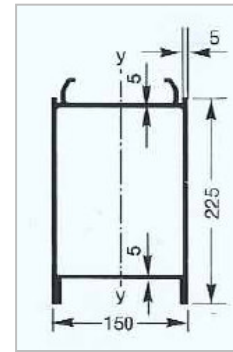
Depending from the existing water head and channel width are three different types of stop logs available:



Type DB1
 Weight per m: 8,51 kg/m
 Weight per m²: 28,35 kg/

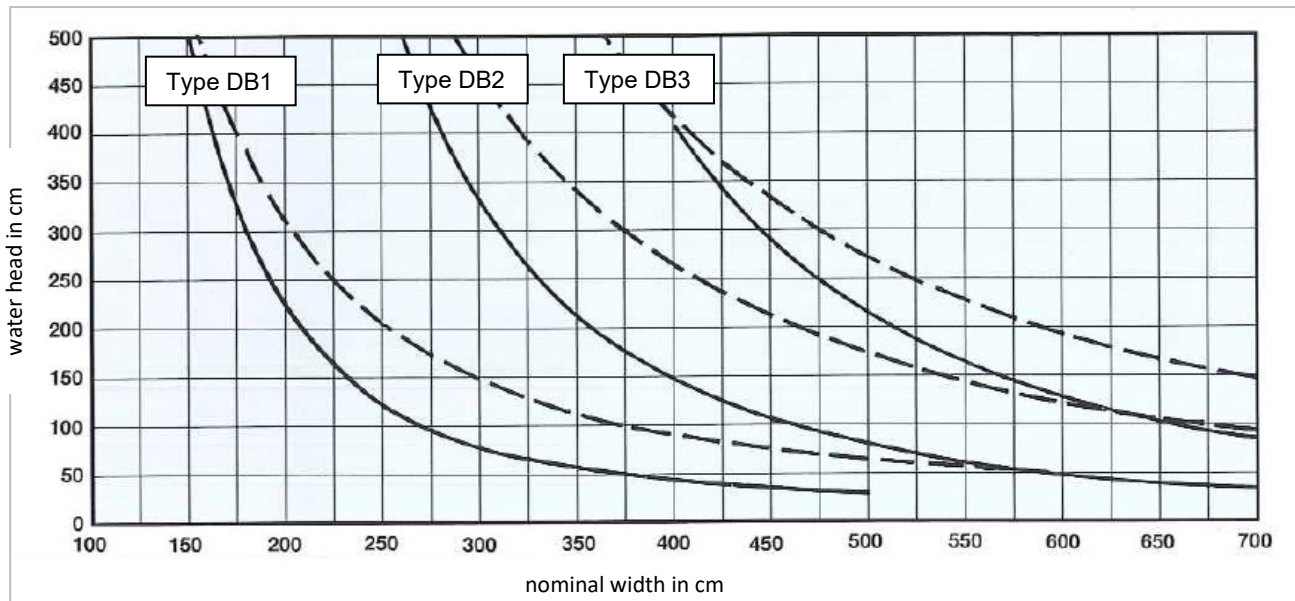


Type DB2
 Weight per m: 7,26 kg/m
 Weight per m²: 48,42 kg/



Type DB3
 Weight per m: 11,17 kg/m
 Weight per m²: 49,66 kg/

Chart for Stop Log selection



——— max. acc. tension
 95 N/mm²
 - - - - max. deflection
 1/150 nominal width

