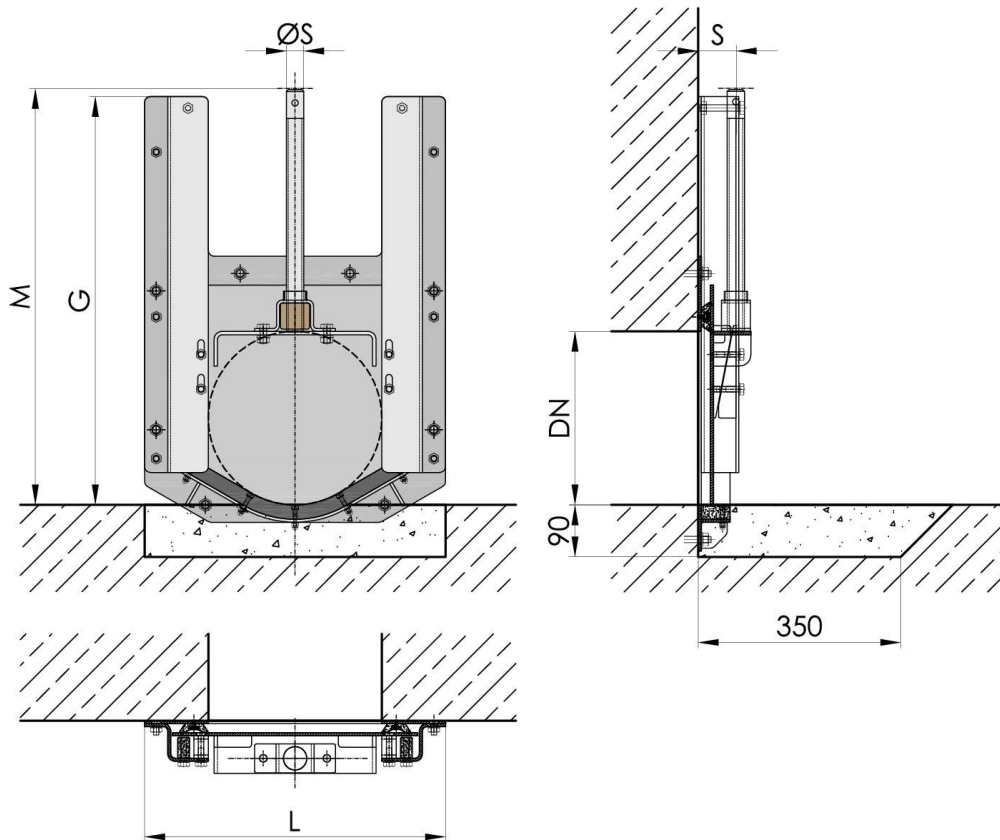


Dimension DN 150 to 600 - Wall fixing



| Dimension | L | G | M | S | ØS | Weight [kg] |
|-----------|-----|------|------|----|----|---------------|
| DN 150 | 330 | 390 | 420 | 65 | 24 | 12 |
| DN 200 | 380 | 490 | 530 | 65 | 24 | 15 |
| DN 250 | 430 | 575 | 620 | 65 | 24 | 21 |
| DN 300 | 520 | 706 | 720 | 65 | 30 | 33 |
| DN 400 | 620 | 906 | 940 | 65 | 30 | 47 |
| DN 500 | 720 | 1106 | 1140 | 65 | 36 | 62 |
| DN 600 | 820 | 1306 | 1350 | 65 | 36 | 81 |

Design: TESACO, acc. to DIN 19569-4, BS 7775:2005, ANSI/AWWA C561-04, 4-face sealing

Material: The following standard material combinations are available:

Type: A4 - Frame and door fabricated from S.S. 316
 Type: A2 - Frame and door fabricated from S.S. 304

Door seal made of waste water resistant neoprene
 Wall seal made of Silicone (to be provided locally)
 Wedge components made of plastic PA
 Spindle nut made of corrosion resistant bronze
 Spindle made of stainless steel type 316
 Fastening elements made from S.S.316

Corrosion protection: Stainless steel pickled and passivated

