

### Wall bracket with square cap – T-key operated

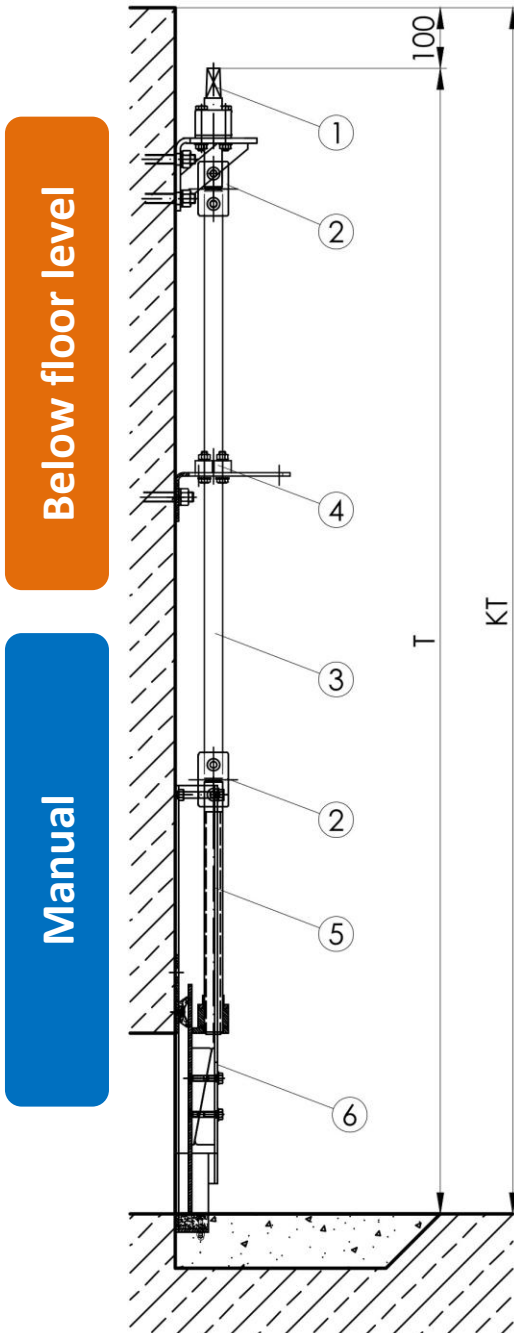
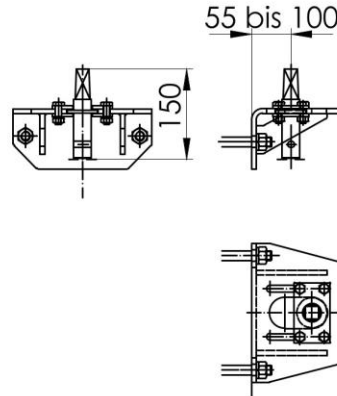
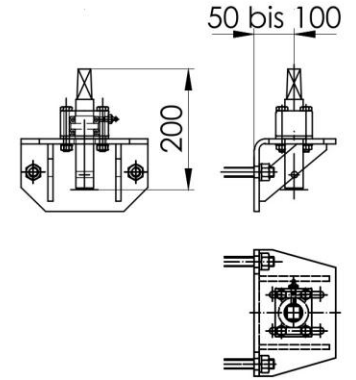


Figure with Penstock C20-Series

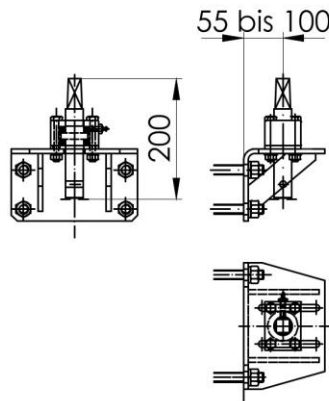
**Typ100 ST2A**  
DN 150 bis DN 250



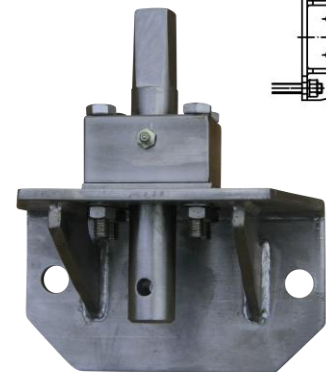
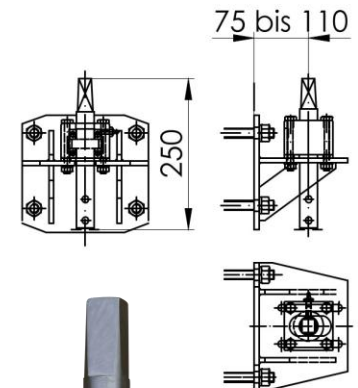
**Typ100 ST2**  
DN 300 bis DN 500



**Typ100 ST3**  
DN 500 bis DN 800



**Typ100 STX**  
ab DN 900



Example → Type 100-ST2

#### KEY

- 1 Drive
- 2 Coupling
- 3 Spindle extension
- 4 Spindle guide (only if required)
- 5 Spindle
- 6 Penstock

- T Installation depth
- KT Channel depth

#### Material:

Type 100ST: Wall bracket made from S.S. 316  
 Shaft with square cap (21/25) made from S.S. 316  
 Ball bearing acc. DIN 625  
 Fastening elements made from S.S. 316

**Optional:** with digital position indicator

**Operating:** manual by T-key / Operating key