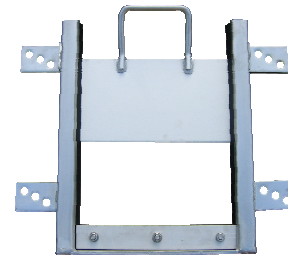
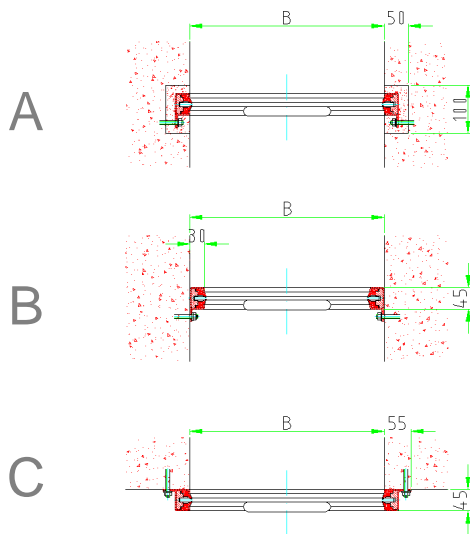
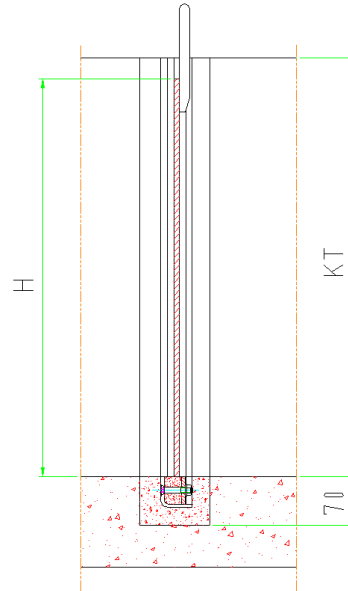
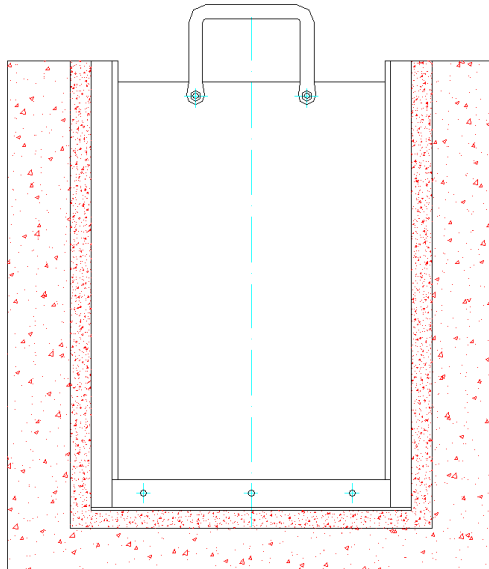


## Dimension 200 x 200 to 1200 x 1200



Fixing types:

- A - Grouted in channel recesses
- B - Wall fixing inside the channel
- C - Wall fixing in front of the channel

In addition all three types could be combined with each other.

Design: TESACO, acc. to DIN 19569-4, 3-face sealing

Material: The following standard material combinations are available:

- Type: A4 - Frame and door fabricated from S.S. 316
- Type: A2 - Frame and door fabricated from S.S. 304

Sealing made from waste water resistant rubber neoprene

Sliding bars made from plastic PE

Fastening elements made from S.S.316

Optional: round bottom sealing; extended handle; locking device

Corrosion protection: Stainless steel pickled and passivated