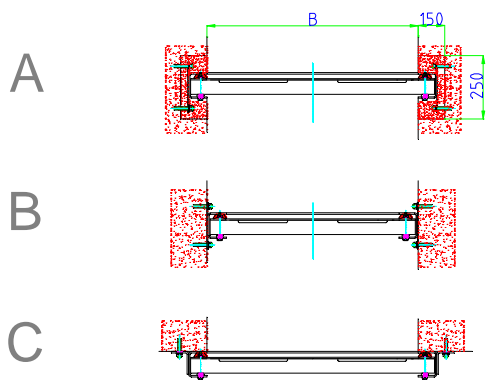
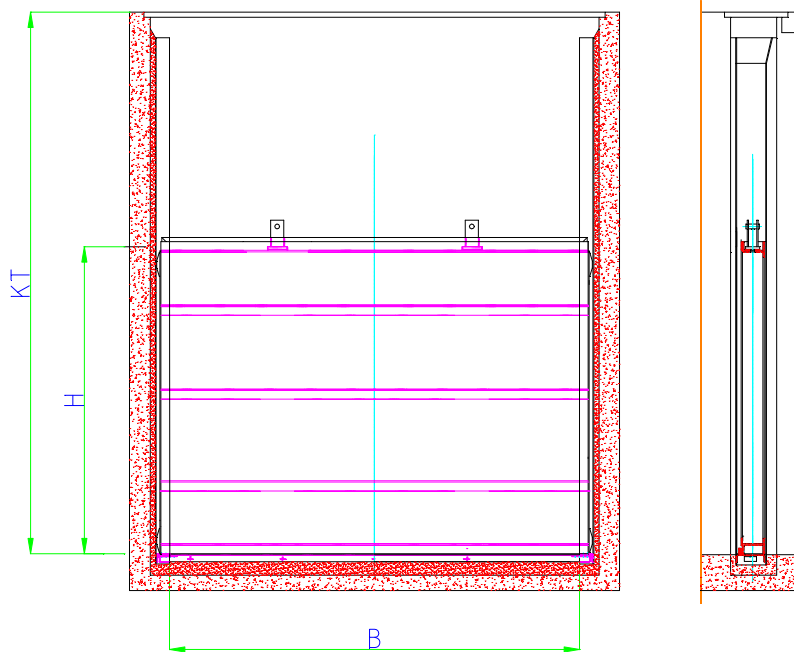


One- or multiple part design



Fixing types:

- A - Grouted in channel recesses
- B - Wall fixing inside the channel followed by grouting
- C - Wall fixing in front of the channel

In addition all three types could be combined with each other.

Design: TESACO, acc. to DIN 19569-4, 3-face sealing or 4-face sealing

Construction/Function: Stop logs consists of the following main components:

- 1) Stop Log with or without relief valves
- 2) Guides with or without top-seal

Stop logs are needed for temporary shutting-off of big approach channels. The stop logs could be put alternately to different channels i.e. applied to different guides.

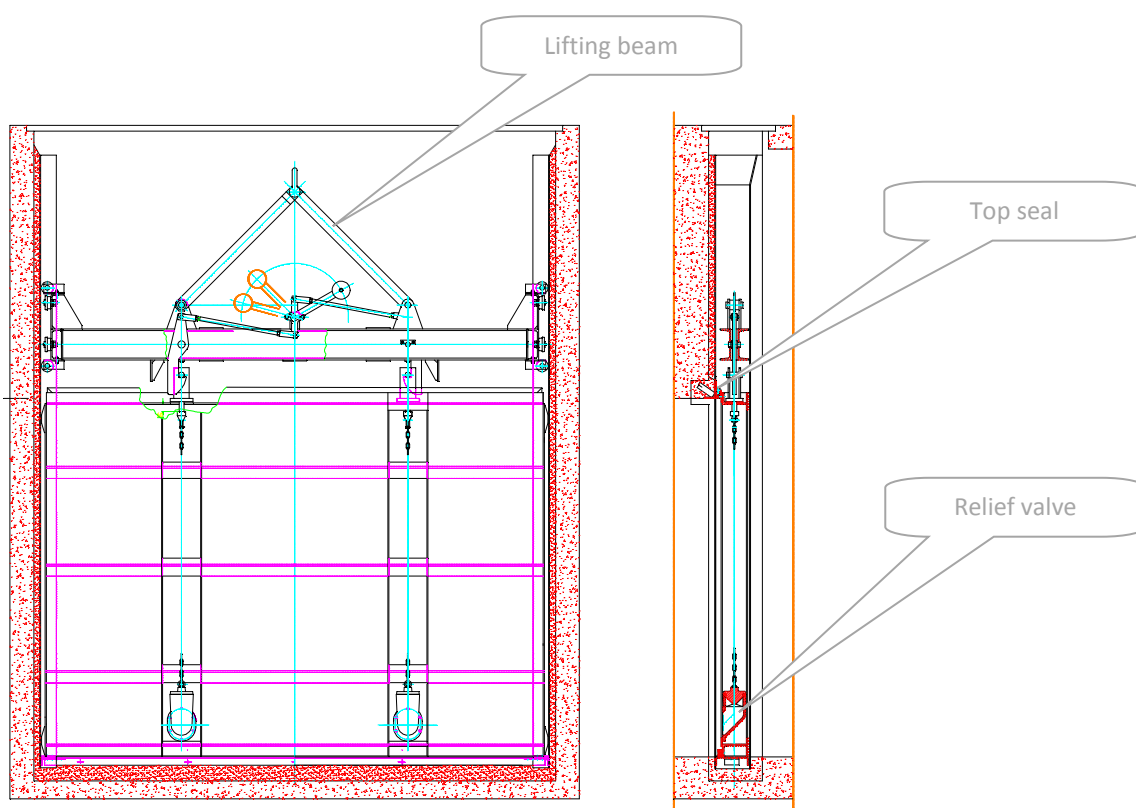
The lifting is done by local lifting devices like crane, excavator etc. and has generally to be done under pressure balance. If there no pressure balance could be provided locally, the stop logs could be equipped with relief valves.

Material: Stop Logs made from mild steel, S.S. 304, S.S: 316Ti
 Guides made from mild steel, S.S. 304, S.S: 316Ti
 Sealing on guides made from waste water resistant neoprene
 Slide bars made from plastic PE
 Fastening elements made from S.S.316

Corrosion protection: Stainless steel pickled and passivated

Stop logs could be equipped with the following special designs:

- 4-face sealing: If there is an aperture in a vertical wall instead of an open channel, the stop logs could be equipped with a top seal.
- Relief valve: As the stop logs should be generally lifted at pressure balance, it is recommended to use installed relief valves in case the pressure balance could not be provided locally. The relief valves are initiated automatically via chains during the lifting procedure of the stop logs and provide the pressure balance.
- Lifting beam: For very deep channels it is recommended to do the lifting of the stop log by support of a lifting beam. The lifting beam is a self-acting lifting device as it automatically latch the lifting eye during raising and lowering.



Detail Lifting beam:

